



Plan and Monitor your Dynamic Supply Chain Operations with Entersoft WMS[®]



www.bitsoftware.eu



About Entersoft WMS®

Entersoft WMS®, part of the Entersoft Business Suite of products, is a modern, state-of-the-art software solution. It will enable your organization to decide upon daily operational processes, reduce complexity, optimize costs and manage resources within and beyond the warehouse boundaries and, eventually, will leverage the role of the Logistics Director as an equal member of the management board.

The solution is scalable and adaptable to the size and the complexity of your business.

Standard functionality, along with specialized modules, applies to warehouses of small size and medium-low complexity; whereas, advanced features and optimized process algorithms can effectively manage the requirements of more complex and larger warehouses.

Entersoft WMS® is designed to meet even the most demanding 3PL & 4PL requirements.



Item	Unit	Building	Code	Bar code	Qty in packaging	Qty in pallets	Fullness	Comment	Locked	Inhibit
		AI	COUNT		127.000	2.000		Non defined links for sub-packagings and containers		
		AI	AI 01 01 A	1000001		1.000		Undefined links for containers		
		AI	AI 01 01 B	1000002	138.000	6.000		Non defined links for sub-packagings and containers		
		AI	AI 01 01 C	1000003	180.000	10.000		Non defined links for sub-packagings and containers		

Visual Warehouse Layout



With Entersoft WMS® you can increase the efficiency of your Warehouse Operations. The system can enable you to:

Why Entersoft WMS®?

- Manage product attributes such as Lot, Date, Size & Colors, Serial Number etc.
- Improve the Utilization of Warehouse resources
- Optimize handling of stock and picking bins by using intelligent algorithms to effectively manage warehouse space

Control inventory-handling costs

Choose among a variety of picking methods that fit your business needs in the most efficient way:

Group Picking



Pick&Pack



Pick-to-Cart



Integrate with pick-assist technologies:

Conveyors



Pick-to-Light
Sort-to-Light
Put-to-Light



Voice picking

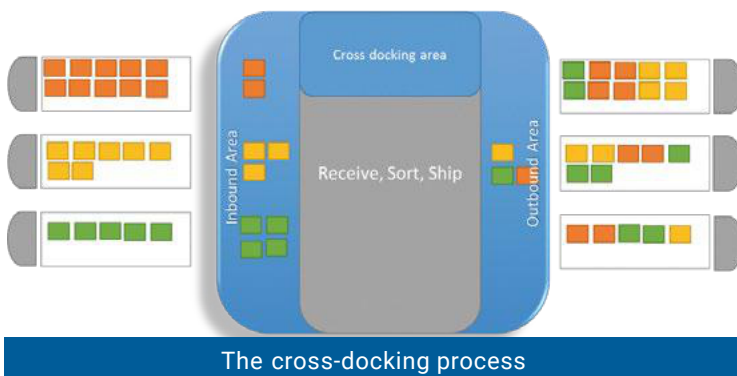


- Schedule trucks, drivers and deliveries to decrease transportation costs
- Minimize returns by abiding FIFO-FEFO
- Measure employee's performance

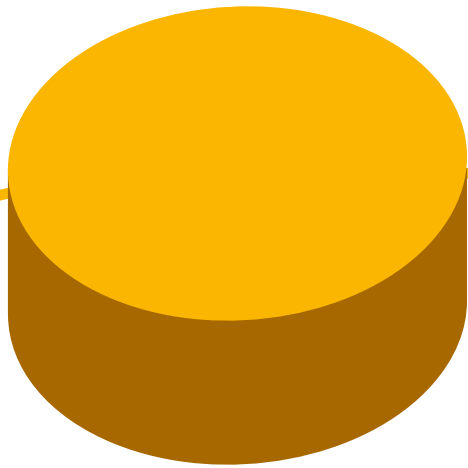


Do more with less resources

- Use optimized picking algorithms to increase picking efficiency
- Utilize slotting optimization
- Exploit packing station ES Touch technology to enhance and decrease shipment errors
- Use event driven processes - cycle counting based on number of picks and more attributes
- Employ directed putaway & replenishment algorithms
- Implement cross-docking activity



The cross-docking process



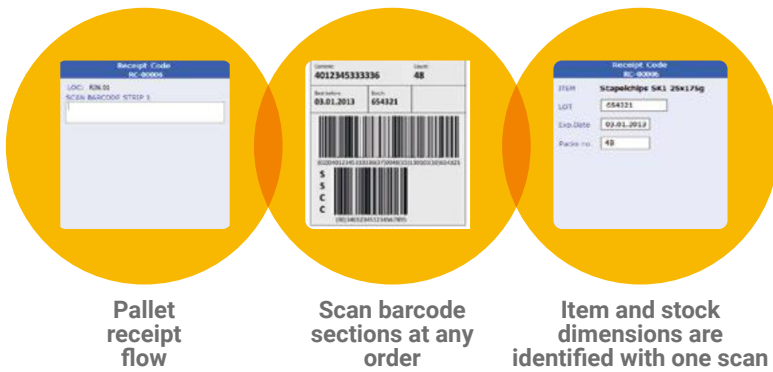
Entersoft WMS® provides flexibility by supporting RF scanners from Windows CE to Android and Windows 10 thus preserving existing investments. The system is customizable through:

An engine for Warehouse Workflows design

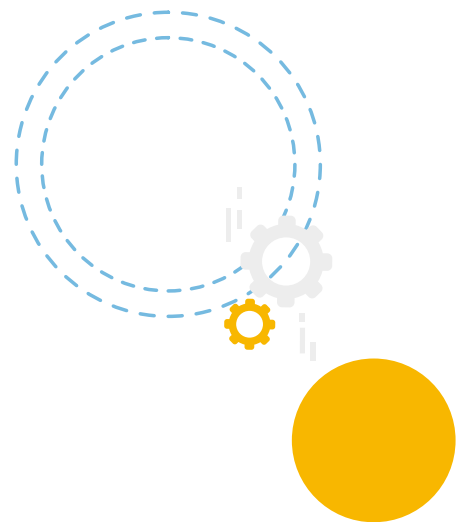
An embedded key-user oriented Report, OLAP and dashboards designer

A scripting mechanism for developing custom workflows

It integrates with major ERP systems and provides advanced mechanism for user and role security as well as event logging.



Homogenous Pallet Receipt Workflow



Functionalities & Modules

- WMS Standard** ● Multiple item barcodes & packing units handling, Container management, Barcode printers management, Storage location management, Resource management, Goods receipt ad-hoc or vs ASN (Advanced Shipment Notice), Directed Putaway based on capacity and stock allocation rules, Order picking & picking per recipient, Internal movements, Repackaging & Unpackaging, Returns management, Loading (bulk or containers), Annual or Cycle Inventory Count.
- Packing** ● Pick & Pack, Pack after Picking, Mobile Packing, Touch Packing Stations, Packing Algorithms based on capacity & material constraints, Packing Lists & Packing Labels printouts.
- Inventory Take Management** ● Schedule annual inventory, take tasks per storage location/item/pallet/etc., resource allocation per task, update ERP stock real-time, perform cycle counting based on system's proposals.
- Routing & Shipment** ● Loading management based on loading sequence, allocation-loading algorithms according to routes & truck capacity, documents issue per truck, map views of routes, WMS Mobile loading, Staging, Loading List printouts.
- Cross-docking** ● Allocate customer orders on expected receipts, one-step and two-step cross docking, track cross-docking phase on both receipts and shipments, evaluate associated time and cost for the cross-docking activity.
- Visual Warehouse Management** ● Visual layout of storage areas, storage location status (locked, inactive), capacity usage, disposition/reservation state, behavior patterns, log of actions per storage location, inventory levels per storage location.
- Manufacturing Warehouse Management** ● Production order management, issue production & consumption documents, track raw materials movements, automatic lot creation, lot genealogy, make-to-order processes are also supported.
- WMS Advanced** ● Further functionalities in goods receipt & putaway are enabled, group picking & sorting is also enabled, stock replenishment to picking locations based on embedded algorithms, stock allocation rules per item & customer profile, fully guided workflows for receipts, putaway, picking, advanced resource allocation use cases. Integration with Pick to Light, Pick to Cart, Conveyors, Sorters, AS/RS. Multiple depositors and/or sites management. Shifts management, Automatic assignment of tasks, rescheduling and alert management.
- Value-added Services** ● Kitting, Lot Genealogy, Lot Traceability, Re-packaging. Serial Number Management, Labeling, Variable Measurement Unit Management (groceries).
- WMS Mobile** ● Execute Receipt, Putaway, Picking, Packing, Loading, Internal Movements, Inventory Take Workflows, Check inventory & data with the use of industrial mobile devices (PDAs). WMS Mobile Request for Approvals & Proof of Delivery (POD) modules are also supported.
- Supply Chain Execution Analytics** ● Overview of imports/exports, reception and delivery lines analysis, delivery errors percentage analysis, on-time delivery percentages, percentage of reservations/unsuitable, resource efficiency statistics.
- MIS 360°** ● MIS reports and BI Analytics for tracking/monitoring activities from remote users over the web or through mobile apps. Reporting supported for both Overview Control and Daily Checks. Daily Checks aims at real-time monitoring and management of daily tasks performed by warehouse staff. Overview Control is a managerial tool for long-term decision-making.



www.bitsoftware.eu | T: +40 368 412120 | contact@bitsoftware.ro